



### Product Identification

Item Code	Flavor	SAP Material	GTIN Code	Unit UPC
10286	Strawberry 6oz	12393	10815473012002	815473012005
10287	Strawberry Banana 6 oz	12394	10815473012019	815473012012
10289	Peach 6 oz	12392	10815473012033	815473012036
10285	Vanilla 6 oz	12391	10815473011999	815473011992
10291	Raspberry 6oz	12395	10815473012040	815473012043
10288	Blueberry 6 oz	12397	10815473012026	815473012029
10290	Black Cherry 6 oz	12398	10815473012057	815473012050
10284	Berries N Cream 6 oz	12396	10815473012064	815473012067

### Nutrition Facts

Serving Size 1 Container

#### Amount Per Serving

	Vanilla (170 g)	Strawberry (170 g)	Strawberry Banana (170 g)	Berries n' Cream (170 g)
<b>Calories</b>	100	100	100	100
Calories from Fat	0	0	0	0
	<b>%Daily Value*</b>	<b>%Daily Value*</b>	<b>%Daily Value*</b>	<b>%Daily Value*</b>
<b>Total Fat</b>	0g <b>0%</b>	0g <b>0%</b>	0g <b>0%</b>	0g <b>0%</b>
Saturated Fat	0g <b>0%</b>	0g <b>0%</b>	0g <b>0%</b>	0g <b>0%</b>
Trans fat	0g	0g	0g	0g
<b>Cholesterol</b>	5mg <b>2%</b>	5mg <b>2%</b>	5mg <b>2%</b>	5mg <b>2%</b>
<b>Sodium</b>	120mg <b>5%</b>	115mg <b>5%</b>	115mg <b>5%</b>	120mg <b>5%</b>
<b>Potassium</b>	260mg <b>7%</b>	270mg <b>8%</b>	280mg <b>8%</b>	260mg <b>7%</b>
<b>Total Carbohydrate</b>	17g <b>6%</b>	17g <b>6%</b>	17g <b>6%</b>	16g <b>5%</b>
Dietary fiber	3g <b>12%</b>	3g <b>12%</b>	3g <b>12%</b>	3g <b>12%</b>
Sugars	11g	11g	12g	11g
<b>Protein</b>	6g <b>12%</b>	6g <b>12%</b>	6g <b>12%</b>	6g <b>12%</b>

\* Percent Daily Values are based on a 2,000 calorie diet. Your daily values may be higher or lower depending on your calorie needs.

Calories	2,000	2,500
Total Fat	Less Than 65g	80g
Sat Fat	Less Than 20g	25g
	Less Than 300mg	300mg
Cholesterol		
Sodium	Less Than 2,400mg	2,400mg
Potassium	3,500m	3,500mg
Total Carbohydrate	300g	375g
Dietary Fiber	25g	30g

Vitamin A	15%	15%	15%	15%
Vitamin C	2%	4%	4%	2%
Calcium	20%	20%	20%	20%
Iron	0%	0%	0%	0%
Vitamin D	30%	30%	30%	30%

# Nutrition Facts

Serving Size 1 Container

## Amount Per Serving

	Blueberry (170 g)	Peach (170 g)	Black Cherry (170 g)	Raspberry (170 g)
<b>Calories</b>	100	100	100	100
Calories from Fat	0	0	0	0
	<b>%Daily Value*</b>	<b>%Daily Value*</b>	<b>%Daily Value*</b>	<b>%Daily Value*</b>
<b>Total Fat</b>	0g <b>0%</b>	0g <b>0%</b>	0g <b>0%</b>	0g <b>0%</b>
Saturated Fat	0g <b>0%</b>	0g <b>0%</b>	0g <b>0%</b>	0g <b>0%</b>
Trans fat	0g	0g	0g	0g
<b>Cholesterol</b>	5mg <b>2%</b>	5mg <b>2%</b>	5mg <b>2%</b>	5mg <b>2%</b>
<b>Sodium</b>	120mg <b>5%</b>	120mg <b>5%</b>	120mg <b>5%</b>	120mg <b>5%</b>
<b>Potassium</b>	260mg <b>7%</b>	270mg <b>8%</b>	270mg <b>8%</b>	260mg <b>7%</b>
<b>Total Carbohydrate</b>	17g <b>6%</b>	17g <b>6%</b>	17g <b>6%</b>	17g <b>6%</b>
Dietary fiber	3g <b>12%</b>	3g <b>12%</b>	3g <b>12%</b>	3g <b>12%</b>
Sugars	11g	11g	11g	11g
<b>Protein</b>	6g <b>12%</b>	6g <b>12%</b>	6g <b>12%</b>	6g <b>12%</b>

\* Percent Daily Values are based on a 2,000 calorie diet. Your daily values may be higher or lower depending on your calorie needs.

	Calories	2,000	2,500
Total Fat	Less Than	65g	80g
Sat Fat	Less Than	20g	25g
	Less Than	300mg	300mg
Cholesterol			
Sodium	Less Than	2,400mg	2,400mg
Potassium		3,500mg	3,500mg
Total Carbohydrate		300g	375g
Dietary Fiber		25g	30g

Vitamin A	15%	15%	15%	15%
Vitamin C	2%	6%	2%	2%
Calcium	20%	20%	20%	20%
Iron	0%	0%	0%	0%
Vitamin D	30%	30%	30%	30%

## Ingredient Statements

### ▪ Berries n' Cream

Cultured Grade A Pasteurized Nonfat Milk, Crystalline Fructose, Blackberry Puree, Raspberry Puree, Black Raspberry Puree and Boysenberry Puree, Natural Flavors, Corn Starch-Modified, Inulin Fiber, Whey Protein Concentrate, Kosher Gelatin, Sucralose, Citric Acid, Red 40, Blue 1, Potassium Sorbate (To Maintain Freshness), Sodium Citrate, Vitamin A Palmitate and Vitamin D3.

Contains: L. Acidophilus and Bulgaricus, Bifidobacterium SP. and S. Thermophilus.

### ▪ Black Cherry

Cultured Grade A Pasteurized Nonfat Milk, Black Cherries, Crystalline Fructose, Natural Flavors, Corn Starch-Modified, Inulin Fiber, Whey Protein Concentrate, Kosher Gelatin, Sucralose, Citric Acid, Red 40, Blue 1, Potassium Sorbate (To Maintain Freshness), Sodium Citrate, Vitamin A Palmitate and Vitamin D3.

Contains: L. Acidophilus and Bulgaricus, Bifidobacterium SP. and S. Thermophilus.

### ▪ Blueberry

Cultured Grade A Pasteurized Nonfat Milk, Blueberries, Crystalline Fructose, Corn Starch-Modified, Inulin Fiber, Whey Protein Concentrate, Kosher Gelatin, Natural Flavors, Sucralose, Citric Acid, Potassium Sorbate (To Maintain Freshness), Red 40, Blue 1, Sodium Citrate, Vitamin A Palmitate and Vitamin D3.

Contains: L. Acidophilus and Bulgaricus, Bifidobacterium SP. and S. Thermophilus.

### ▪ Peach

Cultured Grade A Pasteurized Nonfat Milk, Peaches, Crystalline Fructose, Corn Starch-Modified, Inulin Fiber, Whey Protein Concentrate, Kosher Gelatin, Natural Flavors, Sucralose, Citric Acid, Potassium Sorbate (To Maintain Freshness), Annatto (For Color), Sodium Citrate, Vitamin A Palmitate and Vitamin D3.

Contains: L. Acidophilus and Bulgaricus, Bifidobacterium SP. and S. Thermophilus.

### ▪ Raspberry

Cultured Grade A Pasteurized Nonfat Milk, Raspberries, Crystalline Fructose, Corn Starch-Modified, Inulin Fiber, Whey Protein Concentrate, Kosher Gelatin, Natural Flavors, Sucralose, Red 40, Blue 1, Citric Acid, Potassium Sorbate (To Maintain Freshness), Sodium Citrate, Vitamin A Palmitate and Vitamin D3.

Contains: L. Acidophilus and Bulgaricus, Bifidobacterium SP. and S. Thermophilus.

- Strawberry

Cultured Grade A Pasteurized Nonfat Milk, Strawberries, Crystalline Fructose, Corn Starch-Modified, Inulin Fiber, Whey Protein Concentrate, Kosher Gelatin, Natural Flavors, Sucralose, Citric Acid, Potassium Sorbate (To Maintain Freshness), Sodium Citrate, Red 40, Vitamin A Palmitate and Vitamin D3.

Contains: L. Acidophilus and Bulgaricus, Bifidobacterium SP. and S. Thermophilus.

- Strawberry Banana

Cultured Grade A Pasteurized Nonfat Milk, Strawberries, Bananas, Crystalline Fructose, Corn Starch-Modified, Inulin Fiber, Whey Protein Concentrate, Kosher Gelatin, Natural Flavors, Sucralose, Citric Acid, Potassium Sorbate (To Maintain Freshness), Red 40, Blue 1, Sodium Citrate, Vitamin A Palmitate and Vitamin D3.

Contains: L. Acidophilus and Bulgaricus, Bifidobacterium SP. and S. Thermophilus.

- Vanilla

Cultured Grade A Pasteurized Nonfat Milk, Crystalline Fructose, Corn Starch-Modified, Inulin Fiber, Whey Protein Concentrate, Kosher Gelatin, Natural Flavors, Sucralose, Citric Acid, Potassium Sorbate (To Maintain Freshness), Sodium Citrate, Vitamin A Palmitate and Vitamin D3.

Contains: L. Acidophilus and Bulgaricus, Bifidobacterium SP. and S. Thermophilus.

### **Allergen Statement**

Contains: Milk

### **Labeling Attributes**

- 6 oz

1. Net WT 6 oz (170g)
2. Vitamins A&D with added Fiber
3. Nonfat yogurt
4. 1/3 fewer calories than regular yogurt
5. Kosher K
6. 100 Calories
7. Gluten Free
8. Contains Milk
9. Keep refrigerated
10. Live & Active Cultures – Meets National Yogurt Association Criteria for Live and Active Culture Yogurt

# Introducing **New Borden®** Yogurt

## Specially formulated for schools

*From the most trusted Brand in dairy for over 150 years*



4oz. Serving

### Nutritional Highlights:

- Nonfat
- All Natural
- No Artificial Colors, Flavors or Sweeteners
- No High Fructose Corn Syrup
- 16g sugar
- Fortified with Vitamins A and D
- 20% RDV Calcium
- 25% RDV Vitamin D
- 110 calories

### Available in 4 Popular Flavors:

- Strawberry
- Strawberry Banana
- Peach
- Cherry Vanilla



See Flavor Line-up Details for Ingredients and Nutrition Facts

# New Borden® 4oz. Yogurt Flavor Line-Up



## Nutrition Facts

Serving Size 1 Container (113g)

Amount Per Serving		Calories from Fat 0	
		% Daily Value*	
<b>Calories 110</b>			
<b>Total Fat 0g</b>			0%
Saturated Fat 0g			0%
Trans Fat 0g			
<b>Cholesterol 0mg</b>			0%
<b>Sodium 80mg</b>			3%
<b>Potassium 180mg</b>			5%
<b>Total Carbohydrate 22g</b>			7%
Dietary Fiber 0g			0%
Sugars 16g			
<b>Protein 4g</b>			
Vitamin A 10%	Vitamin C 4%		
Calcium 20%	Iron 0%		
Vitamin D 25%			

\*Percent Daily Values are based on a 2,000 calorie diet. Your daily values may be higher or lower depending on your calorie needs.

	Calories: 2,000	2,500
Total Fat	Less than 65g	80g
Saturated Fat	Less than 20g	25g
Cholesterol	Less than 300mg	300mg
Sodium	Less than 2,400mg	2,400mg
Potassium	3,500 mg	3,500 mg
Total Carbohydrate	300g	375g
Dietary Fiber	25g	30g

Calories per gram:  
Fat 9 • Carbohydrate 4 • Protein 4

**INGREDIENTS:** Cultured Grade A non fat milk, sugar, strawberries, modified corn starch, strawberry flavor with other natural flavors, contains less than 1% of (whey protein concentrate, tricalcium phosphate, fruit and vegetable juice (for color), kosher gelatin, carrageenan, citric acid, sodium citrate, potassium sorbate (to maintain freshness), vitamin A palmitate and vitamin D3). Contains live and active yogurt cultures.

## Nutrition Facts

Serving Size 1 Container (113g)

Amount Per Serving		Calories from Fat 0	
		% Daily Value*	
<b>Calories 110</b>			
<b>Total Fat 0g</b>			0%
Saturated Fat 0g			0%
Trans Fat 0g			
<b>Cholesterol 0mg</b>			0%
<b>Sodium 80mg</b>			3%
<b>Potassium 180mg</b>			5%
<b>Total Carbohydrate 22g</b>			7%
Dietary Fiber 0g			0%
Sugars 16g			
<b>Protein 4g</b>			
Vitamin A 10%	Vitamin C 2%		
Calcium 20%	Iron 0%		
Vitamin D 25%			

\*Percent Daily Values are based on a 2,000 calorie diet. Your daily values may be higher or lower depending on your calorie needs.

	Calories: 2,000	2,500
Total Fat	Less than 65g	80g
Saturated Fat	Less than 20g	25g
Cholesterol	Less than 300mg	300mg
Sodium	Less than 2,400mg	2,400mg
Potassium	3,500 mg	3,500 mg
Total Carbohydrate	300g	375g
Dietary Fiber	25g	30g

Calories per gram:  
Fat 9 • Carbohydrate 4 • Protein 4

**INGREDIENTS:** Cultured Grade A non fat milk, sugar, strawberries, banana puree, modified corn starch, strawberry and banana flavors with other natural flavors, less than 1% of (whey protein concentrate, tricalcium phosphate, fruit and vegetable juice (for color), kosher gelatin, carrageenan, sodium citrate, potassium sorbate (to maintain freshness), vitamin A palmitate and vitamin D3). Contains live and active yogurt cultures.

## Nutrition Facts

Serving Size 1 Container (113g)

Amount Per Serving		Calories from Fat 0	
		% Daily Value*	
<b>Calories 110</b>			
<b>Total Fat 0g</b>			0%
Saturated Fat 0g			0%
Trans Fat 0g			
<b>Cholesterol 0mg</b>			0%
<b>Sodium 80mg</b>			3%
<b>Potassium 180mg</b>			5%
<b>Total Carbohydrate 22g</b>			7%
Dietary Fiber 0g			0%
Sugars 16g			
<b>Protein 4g</b>			
Vitamin A 10%	Vitamin C 2%		
Calcium 20%	Iron 0%		
Vitamin D 25%			

\*Percent Daily Values are based on a 2,000 calorie diet. Your daily values may be higher or lower depending on your calorie needs.

	Calories: 2,000	2,500
Total Fat	Less than 65g	80g
Saturated Fat	Less than 20g	25g
Cholesterol	Less than 300mg	300mg
Sodium	Less than 2,400mg	2,400mg
Potassium	3,500 mg	3,500 mg
Total Carbohydrate	300g	375g
Dietary Fiber	25g	30g

Calories per gram:  
Fat 9 • Carbohydrate 4 • Protein 4

**INGREDIENTS:** Cultured Grade A non fat milk, sugar, peaches, modified corn starch, peach flavor with other natural flavors, contains less than 1% of (whey protein concentrate, tricalcium phosphate, kosher gelatin, carrageenan, sodium citrate, potassium sorbate (to maintain freshness), citric acid, annatto and black carrot juice (for color), vitamin A palmitate and vitamin D3). Contains live and active yogurt cultures.

## Nutrition Facts

Serving Size 1 Container (113g)

Amount Per Serving		Calories from Fat 0	
		% Daily Value*	
<b>Calories 110</b>			
<b>Total Fat 0g</b>			0%
Saturated Fat 0g			0%
Trans Fat 0g			
<b>Cholesterol 0mg</b>			0%
<b>Sodium 80mg</b>			3%
<b>Potassium 180mg</b>			5%
<b>Total Carbohydrate 23g</b>			8%
Dietary Fiber 0g			0%
Sugars 16g			
<b>Protein 4g</b>			
Vitamin A 10%	Vitamin C 2%		
Calcium 20%	Iron 0%		
Vitamin D 25%			

\*Percent Daily Values are based on a 2,000 calorie diet. Your daily values may be higher or lower depending on your calorie needs.

	Calories: 2,000	2,500
Total Fat	Less than 65g	80g
Saturated Fat	Less than 20g	25g
Cholesterol	Less than 300mg	300mg
Sodium	Less than 2,400mg	2,400mg
Potassium	3,500 mg	3,500 mg
Total Carbohydrate	300g	375g
Dietary Fiber	25g	30g

Calories per gram:  
Fat 9 • Carbohydrate 4 • Protein 4

**INGREDIENTS:** Cultured Grade A non fat milk, sugar, black cherries, modified corn starch, cherry and vanilla flavors with other natural flavors, contains less than 1% of (whey protein concentrate, tricalcium phosphate, kosher gelatin, carrageenan, black carrot juice (for color), sodium citrate, potassium sorbate (to maintain freshness), citric acid, vitamin A palmitate and vitamin D3). Contains live and active yogurt cultures.





Dairymens Lowfat Cottage Cheese

Plant code 08-07 Sinton Colorado

**Item Codes/UPCs/Case Count**

One five pound /152307 / 4 units / case

**Storage/Code/Allergan**

Refrigerate at 33-40 degrees

Manufactured with 55 days shelf life.

Processed at a facility that produces milk.

**Ingredients:** cultured pasteurized nonfat milk, nonfat milk, whey, salt, food starch (corn), artificial color (titanium dioxide), guar gum, citric acid, potassium sorbate (a preservative), carrageenan, locust bean gum, lactic acid, phosphoric acid, natural flavor, calcium sulfate, sodium and potassium phosphates, vitamin A, palmitate, and enzymes.

**Nutrition Information:**

Serving size	1/2 cup
Calories	80
Calories from fat	10

**Percent Daily Values:**

Total Fat 1g	2%
Saturated Fat 0.5g	4%
Trans Fat 0g	0%
Cholesterol 0mg	3%
Sodium 440mg	18%
Total Carbohydrate 5g	2%
Dietary Fiber 0g	
Sugars 4g	
Protein 13g	25%

**Size & Pack Info**

case cube	1.12'
cases per layer	9
layers per pallet	6
Case dimension	13" x 13" x 11.5"

**H. MEYER DAIRY, LLC.**

415 John Street Cincinnati, OH 45215-5481 Bus: 513-948-2600 Fax: 513-948-2667 [www.meyerdairy.com](http://www.meyerdairy.com)

S56725-P0096  
S56725-P0470

12

12

**Tetra Pak**  
PROTECTS WHAT'S GOOD™  
**OPEN OTHER SIDE**

*All The Dairy Best  
To You...From Dairymens®*

**SELL BY** ▶

**Dairymens®**  
**FAT FREE  
CHOCOLATE MILK**  
VITAMIN A&D ADDED

**PUSH UP** **HERE** **S P O U T** **HERE** **PUSH UP**  
**TO OPEN**

*All The Dairy Best  
To You...From Dairymens®*

◀ **SELL BY**

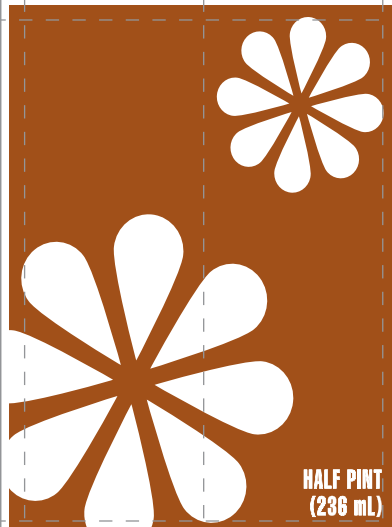
**Dairymens®**  
**FAT FREE  
CHOCOLATE MILK**  
VITAMIN A&D ADDED

**Eat Healthy.  
Get Active.  
Make a Difference.**



To get involved, go to  
**FuelUpToPlay60.com**

©2011 National Dairy Council®  
©2011 NFL Properties LLC.



**HALF PINT  
(236 mL)**

**GRADE A • PASTEURIZED • HOMOGENIZED**

**Nutrition Facts**

Serving Size 1 carton (236 mL)

Amount Per Serving

**Calories 120** Calories from Fat 0  
% Daily Value\*

**Total Fat 0g** 0%

Saturated Fat 0g 0%

Trans Fat 0g

**Cholesterol 0mg** 0%

**Sodium 240mg** 10%

**Total Carbohydrate 23g** 8%

Dietary Fiber 0g 0%

Sugars 21g

**Protein 8g**

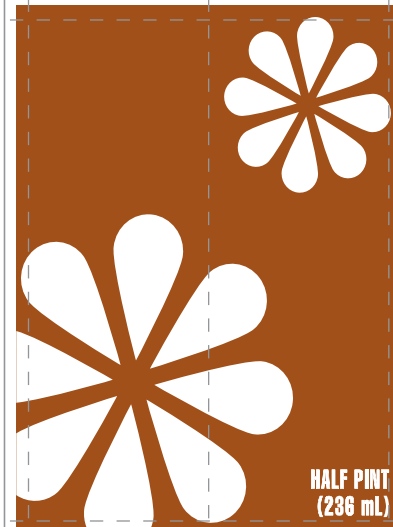
Vitamin A 10% • Vitamin C 2%

Calcium 25% • Iron 0% • Vitamin D 30%

\*Percent Daily Values are based on a 2,000 calorie diet.

INGREDIENTS: NONFAT MILK, SUCROSE, CORN STARCH, CACAO (PROCESSED WITH ALKALI), SALT, CARRAGEENAN, VANILLIN (ARTIFICIAL FLAVOR), VITAMIN A PALMITATE AND VITAMIN D<sub>2</sub>.

**NATIONAL DAIRY, LLC**  
DALLAS, TEXAS 75231  
1-866-600-2072  
PROCESSED AT PLANT STAMPED  
KEEP REFRIGERATED 35°-40° F



**HALF PINT  
(236 mL)**

**IMPORTANT - YOUR APPROVAL IS REQUIRED**



- OK as submitted - proceed to plates
- OK with revisions - proceed to plates
- Make changes and submit new proof

**NOTE:** Tetra Pak does not assume responsibility for this design to be in compliance with government labeling regulations.

**1** [ ]

**2** [ ]

**3** [ ]

**4** [ ]

Signed \_\_\_\_\_ Date \_\_\_\_\_

**TETRA PAK PREPRESS SIGN-OFF (Internal Use)**

S56726-P0096  
S56726-P0212

**Tetra Pak**  
PROTECTS WHAT'S GOOD™  
**OPEN OTHER SIDE**  
*All The Dairy Best  
To You...From Dairymens®*

12

**SELL BY** ▶

**Dairymens®**  
**FAT FREE  
STRAWBERRY MILK**  
NATURALLY AND ARTIFICIALLY FLAVORED  
VITAMIN A&D ADDED

**PUSH UP** **HERE** **SPOUT** **HERE** **PUSH UP**  
**TO OPEN**

*All The Dairy Best  
To You...From Dairymens®*

◀ **SELL BY**

**Dairymens®**  
**FAT FREE  
STRAWBERRY MILK**  
NATURALLY AND ARTIFICIALLY FLAVORED  
VITAMIN A&D ADDED

**Eat Healthy.  
Get Active.  
Make a Difference.**



To get involved, go to  
**FuelUpToPlay60.com**

©2011 National Dairy Council®  
©2011 NFL Properties LLC.

**HALF PINT  
(236 mL)**

**GRADE A • PASTEURIZED • HOMOGENIZED**

**Nutrition Facts**

Serving Size 1 carton (236 mL)

Amount Per Serving

**Calories 120** Calories from Fat 0

% Daily Value\*

**Total Fat 0g** 0%

Saturated Fat 0g 0%

Trans Fat 0g

**Cholesterol 0mg** 0%

**Sodium 90mg** 4%

**Total Carbohydrate 22g** 7%

Dietary Fiber 0g 0%

Sugars 22g

**Protein 8g** 17%

Vitamin A 10% • Vitamin C 4%

Calcium 30% • Iron 0% • Vitamin D 25%

\*Percent Daily Values are based on a 2,000 calorie diet.

INGREDIENTS: NONFAT MILK, SUCROSE,  
NATURAL AND ARTIFICIAL FLAVORING,  
CARRAGEENAN, DED #40, VITAMIN A  
PALMITATE, VITAMIN Dg.

NATIONAL DAIRY, LLC  
DALLAS, TEXAS 76281

1-800-500-2072  
PROCESSED AT PLANT STAMPED  
KEEP REFRIGERATED 36°-40° F



**HALF PINT  
(236 mL)**

**IMPORTANT - YOUR APPROVAL IS REQUIRED**



- OK as submitted - proceed to plates
- OK with revisions - proceed to plates
- Make changes and submit new proof

NOTE: Tetra Pak does not assume responsibility for this design to be in compliance with government labeling regulations.

**1** [ ]

**2** [ ]

**3** [ ]

**4** [ ]

Signed \_\_\_\_\_ Date \_\_\_\_\_

**TETRA PAK PREPRESS SIGN-OFF (Internal Use)**





**Dairymens Fat Free (Skim) Milk**  
**Plant code 39-112 Cincinnati, OH 45215**

**Item Codes/UPCs/Case Count**

One half pint (8 oz) 104607 (upc-N/A) 50 units / case

**Storage/Code/Allergan**

Refrigerate at 33-40 degrees

Manufactured with 19 days shelf life on plastic containers and 18 days on cartons.

Contains Milk.

**Nutrition Information:**

Serving size	1 cup	
Calories		90
Calories from fat	0	

**Percent Daily Values:**

Total Fat 0g	0%	
Saturated Fat 0g	0%	
Cholesterol 5mg		2%
Sodium 125mg		5%
Total Carbohydrate 13g		4%
Dietary Fiber 0g		
Sugars 12g		
Protein 8g		17%

**Size & Pack Info**

case cube	1.12'	
cases per layer	9	
layers per pallet	6	
Case dimension	13" x 13" x 11.5"	



Dairymens Cultured Buttermilk

Plant code 39-112, Cincinnati, OH 45215

**Item Codes/UPCs/Case Count**

One half gallon jug 129207 (upc-72804-00453-9) 9 units / case

**Storage/Code/Allergan**

Refrigerate at 33-40 degrees

Manufactured with 25 days shelf life on plastic containers and 24 days on cartons.

Contains Milk.

**Nutrition Information:**

Serving size 1 cup (240 mL)

Calories 150

**Calories from fat 70**

**Percent Daily Values:**

Total Fat 8g 12%

Saturated Fat 5g 25%

Trans Fat 0g 0%

Cholesterol 35mg 11%

Sodium 190mg 8%

Total Carbohydrate 12g 4%

Dietary Fiber 0g

Sugars 11g

**Protein 8g 16%**

**Size & Pack Info**

½ gallon

case cube 1.12'

cases per layer 9

layers per pallet 6

Case dimension 13 x 13 x 11.5"

Case weight 30.5lbs.



Dairymens Iced Tea

Plant code 39-112

**Item Codes/UPCs/Case Count**

One gallon jug      514153 (upc-72804-00697) 4 units / case

**Storage/Code/Allergan**

Refrigerate at 33-40 degrees.

Manufactured with 90 days shelf life on plastic containers.

Processed in a plant that also processes milk.

**Nutrition Information:**

Serving size	8 fl oz. (240mL)
Calories	90
Calories from fat	0

**Percent Daily Values:**

Total Fat 0g	0%
Saturated Fat 0g	0%
Cholesterol 0mg	0%
Sodium 10mg	0%
Total Carbohydrate 23g	10%
Dietary Fiber 0g	
Sugars 23g	
Protein 0g	

**Size & Pack Info**

case cube	1.12'
cases per layer	9
layers per pallet	6
Case dimension	13" x 13" x 11.5"

**H. MEYER DAIRY, LLC.**

415 John Street    Cincinnati, OH 45215-5481    Bus: 513-948-2600    Fax: 513-948-2667    [www.meyerdairy.com](http://www.meyerdairy.com)



Orange Juice

Plant code 39-104 Cleveland, OH

**Item Codes/UPCs/Case Count**

One 4oz carton 500707 (upc-none) 75 units / case

**Storage/Code/Allergan**

Refrigerate at 33-40 degrees

Manufactured with 35 days shelf life on plastic containers and 30 days on cartons.

Processed at a facility that produces milk.

**Nutrition Information:**

Serving size	1 cup
Calories	110
Calories from fat	0

**Percent Daily Values:**

Total Fat 0g	0%
Saturated Fat 0g	0%
Trans Fat 0g	0%
Cholesterol 0mg	0%
Sodium 0mg	0%
Total Carbohydrate 27g	9%
Dietary Fiber 0g	
Sugars 21g	
Protein 2g	4%

**Size & Pack Info**

case cube 1.12'

cases per layer 9

layers per pallet 6

Case dimension 13" x 13" x 11



Orange Juice

Plant code 39-104 Cleveland, OH

**Item Codes/UPCs/Case Count**

One half pint carton 500607 (upc-none) 50 units / case

**Storage/Code/Allergan**

Refrigerate at 33-40 degrees

Manufactured with 35 days shelf life on plastic containers and 30 days on cartons.

Processed at a facility that produces milk.

**Nutrition Information:**

Serving size	1 cup
Calories	110
Calories from fat	0

**Percent Daily Values:**

Total Fat 0g	0%
Saturated Fat 0g	0%
Trans Fat 0g	0%
Cholesterol 0mg	0%
Sodium 0mg	0%
Total Carbohydrate 27g	9%
Dietary Fiber 0g	
Sugars 21g	
Protein 2g	4%

**Size & Pack Info**

case cube 1.12'

cases per layer 9

layers per pallet 6

Case dimension 13" x 13" x 11



**Dairymens 1% Strawberry Lowfat Milk**  
**Plant code 39-104 Cleveland, OH 45215**

**Item Codes/UPCs/Case Count**

One pint bottle      128507 (upc-0-72804-00369-3) 20 pints / case

**Storage/Code/Allergan**

Refrigerate at 33-40 degrees

Manufactured with 19 days shelf life on plastic containers.

Contains Milk.

**Nutrition Information:**

Serving size	1 cup (240 mL)
Calories	170
Calories from fat	20

**Percent Daily Values:**

Total Fat 2g	3%
Saturated Fat 1.5g	8%
Cholesterol 10mg	4%
Sodium 90mg	4%
Total Carbohydrate 31g	10%
Dietary Fiber 0g	
Sugars 25g	
Protein 8g	17%

**Size & Pack Info**

pint  
case cube      1.12'  
cases per layer      9  
layers per pallet      6  
case weight      40lbs.  
pallet weight 2300lbs.  
Case dimension      13" x 13" x 11.5"

**H. MEYER DAIRY, LLC.**

415 John Street    Cincinnati, OH 45215-5481    Bus: 513-948-2600    Fax: 513-948-2667    [www.meyerdairy.com](http://www.meyerdairy.com)





Dairymens Vanilla Milk Shake Mix – ½ Gallon

Item # 900853

Plant code 39-104 Dairymens

**Nutrition Information:**

Serving size	½ Cup (96g)
Calories	120
Calories from fat	30

**Percent Daily Values:**

Total Fat 3.5g	5%
Saturated Fat 2g	10%
Cholesterol 15mg	5%
Sodium 100mg	4%
Total Carbohydrate 18g	6%
Dietary Fiber 0g	
Sugars 15g	
Protein 4g	

**Size & Pack Info**

½ Gallon

Packaged with 25 Days

Case dimension 13" x 13" x 11.5"

**H. MEYER DAIRY, LLC.**

415 John Street Cincinnati, OH 45215-5481 Bus: 513-948-8811 Fax: 513-948-8837 [www.meyerdairy.com](http://www.meyerdairy.com)